

## Economic

**Wi-Fi global economic contribution has outpaced expectations!**

**2021:** 2.2 Billion Wi-Fi 6 product shipments & 338 million Wi-Fi 6E devices will enter the market.

**2025:** 5.2 Billion Wi-Fi 6 product shipments ~ 41% support 6GHz by 2025

Representing a 150% increase from the last estimate in 2018.



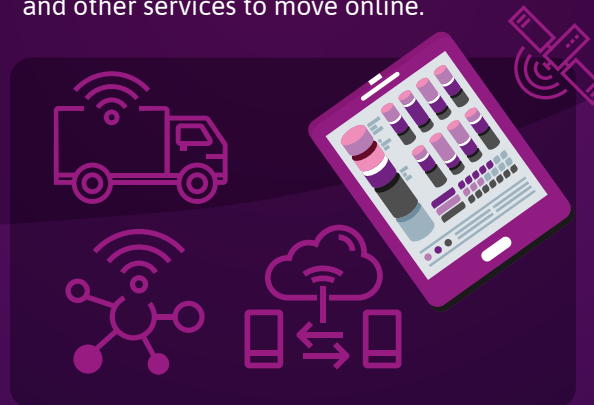
## Social

**Wi-Fi usage boomed by 80% during pandemic**

During lockdown, traffic patterns changed drastically helping the world to stay connected, work from home, remote studying, entertain, stay connect with you loves and socialize with friends.

Wi-Fi activity increased at approx. 80% higher than in pre-pandemic conditions.

Wi-Fi limited the impact of social isolation by enabling business, education, healthcare, and other services to move online.



## Environmental

**Wi-Fi as a sustainable technology**

When deploying technologies, network providers must have to include the climate impact and Sustainable Development Goals (SDGs) of their network. Wi-Fi is a good environmental friendly choice.

Devices like smartphones and IoT connected to Wi-Fi 6 have up to 67% lower power consumption with power-saving features.

Wi-Fi as the ideal solution for indoor coverage and will be improving energy efficiency.



Sources: [ABI Research](#) [Cisco](#) [IDC](#) [ITU](#) [Telecom Advisory Services](#) [WBA Annual Industry Report](#) [Wi-Fi Alliance](#)

